



Millions of combinations available...

An ideal gift, or treat yourself! Prices start from just £69\*

<b>A</b> X222 AAA AAS 11 46 AB ABB 3Y C3 ABC B19 ABM R6 ABT ABB 3Y 5 ADJ ADS 4 V6 AED B17 AGM 5 AGR V12 AHN T900 AJB 5 AJG 6 AJK 7 AJP 44 AJS T90 AJS C1 AJW 15 AKS ALF 253S S17 ALK 69 AM AMA 110Y V555 AMB G1 AMC M88 AMD G1 AMH 6 AMS A1 ANE C14 ANG D3 ANT L12 ANX G60 APB 4 AS 45 HY 45 KAY B17 ASM A5 PEL 4 ASW 41 AT S10 ATS T123 ATT R8 AUD AUD 111T 999 AVU	<b>B</b> BAB 31W R8 BAD D20 BAL B48 31W 635 BBK 5 BCM 3 BDJ 5 BDR RE03 CCA B3 CVA 8 ECA A1 BEB KNO3 BED V8 BEN C4 BET BF 9 81 LL 13 J BLO 550M 330 GUX MH4 32B M3 ROA 330 XLX X5 YAD X24 BMW 80 ARD BOB 9Y BOG 13 V800 THS 80 XA 80 XER V80 XER	<b>C</b> V80 XTA X80 XTR 4 BSA 13 BSR B1 URT X9 BUS W17 BYS R5 CAB G13 CAG C4 LFS D3 CAR 6 CAS V8 CAY V8 CBD 3 CBG RE03 CCA B12 CCS 65 CD CDO 850N 9 DPM DPS 3 M30 CHE C11 DER C1 NDE 9 CJ G1 CUB G1 CJH G1 CJM G1 CJS B14 CJT 70 CKS C11 CKS C1 CRD C14 RAS K14 RKS CLA 55 C13 GGS C13 VER C3 CLK 32 CM G1 CMB G1 CMC G1 CMH G1 CMS 999 C COP 12A R5 BAD G1 COS COS 8Y COT 3S V6 COJ 36 CS 10 CSM 48 CT CUE 147S <b>D</b> D4 DVS D4 RTH D18 DAR S1 DAS DAS 6 D4 TEL G1 DAT D8 ATE D13 ERK 3 DBG 4 DBT D3 ANC D3 ANH D3 ANP C3 DEL D3 NAS D3 NSE DEN 155S DES 88 DEW 11S D6 ENT D6 UNN 9 DGM D3 ANH G14 RRY G4 RYX GAR 37H	<b>D</b> 8 DJL D3 ANK D14 NEK D3 ANL P3 DLL 57 DM G1 DMB G1 DMH D14 NEO C3 GAS 1 GBK M12 GBR 11 GCM P3 DLL 85 GE GEE 6E G1 EMA 7 GEM JAM 3Y 9 JAM 7 JAP C1 JAW 31 JAY V93 JAY 5 JBD JVP 6W 65 JC 5 JCA 21 JCM 6 JCR B17 JCR 9 JCS H1 GGU 333 JCX 37 JD 5 JDC G6 NTS R16 GER 8 GES DOR 155W D3 ANP 813 DPF 9 DPM DPS 3 G4 RYK 5 JCA 21 JCM 6 JCR B17 JCR 9 JCS H1 GGU 333 JCX 37 JD 5 JDC 555 JXG 444 JXU K4 TYS KAT 13S G8 KAY 45 KAY KEJ 99 J841 LEY 45 LF 5 LGM L1 ONA 1 LJ M15 LIN 4 LJS 500 LIX 9 MB CRO 55M 11 MC S9 MCA 3 MCJ MCL 45S 6 MCP 4 MCS NOS 3Y R16 BYN B3 NTU 70 NYV H14 PRA 43 PS P5 ALM 5 PSB B14 PSB P5 COY RAB 81T R4 CHS 8 PAK T500 RAJ RAS 9 G1 RAY ROS 13B S5 RBJ 1 RDD B17 RDH RE03 CCA S49 RED RHY 3E RES 15T R111 NDS RHY 5E R7 BBY R1 DLE R15 HTL 9 RM V9 RMB M50 OMA Y8 ONE 33 OO R40 OPR R16 BVO S7 BBY R18 GER CRO 55M ROS 13B R18 ROV 27 PAM PAM 66H PAR 7Y 7 PAS P4 CHY D3 PAT 7 MJD 3 MJJ S1 MLK D1 MLY 11 PCD 5 PGM B17 PCS B17 PDC P3 ALS G1 PJB 8 PJB PJK 5 5 PJJ PJM 8 PJS 9 G1 PNE PNE 7 P1 ONY R5 BAD R5 CAB	<b>E</b> 5 JDR C1 JDS J6 NNW J6 NYX J3 WEL J6 NNF 6 JGM 5 JHD 5 JHL 8 JHS G1 RAY G1 LYN G16 HDW V12 GSP 3 JJP C15 JYP J6 NKK 7 JKS J6 NNL J6 NYL JLS 9 9 JM C1 JMB C1 JMG 18 JMS T121 JMS C1 JMW J6 NYN C70 JOB Y1 JOH HOW 5Y HP 7 S5 HPA HUS 541N 45 HY <b>F</b> FAG 5Y BLO 550M V12 BYE V12 CYL V8 GTB 55 OM SPY 151X V12 ULT T10 FFE T19 FMB D3 NAS D3 NSE SS FUL G4 BBB G4 BEY GAF 1N G4 LAS D3 ANH G14 RRY G4 RYX GAR 37H	<b>G</b> 5 JDR C1 JDS J6 NNW J6 NYX J3 WEL J6 NNF 6 JGM 5 JHD 5 JHL 8 JHS G1 RAY G1 LYN G16 HDW V12 GSP 3 JJP C15 JYP J6 NKK 7 JKS J6 NNL J6 NYL JLS 9 9 JM C1 JMB C1 JMG 18 JMS T121 JMS C1 JMW J6 NYN C70 JOB Y1 JOH HOW 5Y HP 7 S5 HPA HUS 541N 45 HY <b>H</b> S106 HAN T6 HAR HAR 12Y C1 HAY H 8 S4 HEN 10 HEN 777 HUX G1 HMIH V4 HON P1 ONY H 8 HP 7 S5 HPA HUS 541N 45 HY <b>I</b> 31 P 31 V G4 LAS G14 RRY G4 RYX GAR 37H T16 JAD V8 GOT V8 NEW V8 XJS XJP 1 JPC 8J C9 JFD C1 JRB 9 JRP C1 JRS D9 JSB K3 NNR KSJ 5 777 KKG LAS 3 L4 TUS G8 LAW LOU 153T 10 LRY 63 LIR 600 LXV 54 LY G1 LYN M	<b>J</b> 8 KJS X26 KJK K3 NNR 38 LOT V8 ESP LOT 4S 46 MS B12 MSC MS4 3 1 MSK D3 NAS M30 NCF R4 NDY	<b>K</b> 8 KJS X26 KJK K3 NNR 38 LOT V8 ESP LOT 4S 46 MS B12 MSC MS4 3 1 MSK D3 NAS M30 NCF R4 NDY	<b>L</b> 8 KJS X26 KJK K3 NNR 38 LOT V8 ESP LOT 4S 46 MS B12 MSC MS4 3 1 MSK D3 NAS M30 NCF R4 NDY	<b>M</b> 8 KJS X26 KJK K3 NNR 38 LOT V8 ESP LOT 4S 46 MS B12 MSC MS4 3 1 MSK D3 NAS M30 NCF R4 NDY	<b>N</b> 8 KJS X26 KJK K3 NNR 38 LOT V8 ESP LOT 4S 46 MS B12 MSC MS4 3 1 MSK D3 NAS M30 NCF R4 NDY	<b>O</b> 8 KJS X26 KJK K3 NNR 38 LOT V8 ESP LOT 4S 46 MS B12 MSC MS4 3 1 MSK D3 NAS M30 NCF R4 NDY	<b>P</b> 8 KJS X26 KJK K3 NNR 38 LOT V8 ESP LOT 4S 46 MS B12 MSC MS4 3 1 MSK D3 NAS M30 NCF R4 NDY	<b>Q</b> 8 KJS X26 KJK K3 NNR 38 LOT V8 ESP LOT 4S 46 MS B12 MSC MS4 3 1 MSK D3 NAS M30 NCF R4 NDY	<b>R</b> 8 KJS X26 KJK K3 NNR 38 LOT V8 ESP LOT 4S 46 MS B12 MSC MS4 3 1 MSK D3 NAS M30 NCF R4 NDY	<b>S</b> 8 KJS X26 KJK K3 NNR 38 LOT V8 ESP LOT 4S 46 MS B12 MSC MS4 3 1 MSK D3 NAS M30 NCF R4 NDY	<b>T</b> 8 KJS X26 KJK K3 NNR 38 LOT V8 ESP LOT 4S 46 MS B12 MSC MS4 3 1 MSK D3 NAS M30 NCF R4 NDY	<b>U</b> 8 KJS X26 KJK K3 NNR 38 LOT V8 ESP LOT 4S 46 MS B12 MSC MS4 3 1 MSK D3 NAS M30 NCF R4 NDY	<b>V</b> 8 KJS X26 KJK K3 NNR 38 LOT V8 ESP LOT 4S 46 MS B12 MSC MS4 3 1 MSK D3 NAS M30 NCF R4 NDY	<b>W</b> 8 KJS X26 KJK K3 NNR 38 LOT V8 ESP LOT 4S 46 MS B12 MSC MS4 3 1 MSK D3 NAS M30 NCF R4 NDY	<b>X</b> 8 KJS X26 KJK K3 NNR 38 LOT V8 ESP LOT 4S 46 MS B12 MSC MS4 3 1 MSK D3 NAS M30 NCF R4 NDY	<b>Y</b> 8 KJS X26 KJK K3 NNR 38 LOT V8 ESP LOT 4S 46 MS B12 MSC MS4 3 1 MSK D3 NAS M30 NCF R4 NDY	<b>Z</b> 8 KJS X26 KJK K3 NNR 38 LOT V8 ESP LOT 4S 46 MS B12 MSC MS4 3 1 MSK D3 NAS M30 NCF R4 NDY
--	---	---	---	---	--	---	---	---	---	---	---	---	---	---	---	---	---	---	---	---	---	---

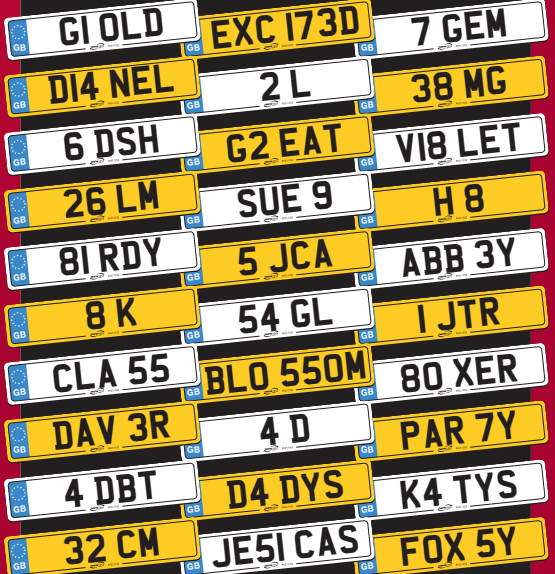
THIS IS A VERY SMALL SELECTION - OVER 45 MILLION AVAILABLE!



WHY NEW REG?

www.newreg.com is a source web site of over 45 million personalised registration marks, all displayed in the true number plate style, giving you a feel for how your New Reg will look.

- We offer finance with leading financial institutions.
- We handle the entire transfer of your Log Book, Tax Disc and MOT Certificate (where applicable).
- We handle all your documents by recorded delivery (on request).
- We secure your New Reg with any major credit/debit card immediately.
- Acrylic plates delivered to your door.



REG JTS

TXT REG followed by your initials (3 max) to: **81025**

To receive New Reg examples. All texts are charged at 25p each

**0870 78 76 615**  
or visit [www.newreg.com](http://www.newreg.com)

Calls charged at National Rate, this is NOT a premium rate call. All calls are recorded for your security.

NEW REG • GOVERNMENT OFFICES • CIVIC CENTRE • WEST PADDOCK • LEYLAND • LANCASHIRE • PR25 1DQ.  
New Reg sell unissued Government stock and historic combinations dating back to 1903.

\*All subject to availability. DOT transfer fee and terms and conditions, some numbers are subject to VAT. Under the distance selling regulations we must notify you that our service begins immediately upon payment being taken, subsequently no cooling off period or refunds are given and purchased marks are not subject to cancellation. The New Reg Logo and 'Whatever. We've probably got your New Reg.' are registered trademarks of New Reg Limited.